

ROANOKE PARK CONSERVANCY

Honoring the Past, Planting the Future

TREE RESOURCE IMPROVEMENT & MAINTENANCE (T.R.I.M.) GRANT APPLICATION

June 1, 2012



T.R.I.M. Estimated Project Cost Worksheet

Applicant Roanoke Park Conservancy Contact person Curt Watkins, President
Address 3664 Madison Ave
Phone 816-665-5504 County Jackson
City/State Kansas City, Missouri ZIP (9-digit ZIP required) 64111
Project location Roanoke Park, Kansas City, Missouri 64111

Project Type (check all that apply):

☒ Inventory ☐ Removal ☐ Pruning ☐ Education ☐ Planting ☐ Other

Provide costs only for items associated with your project.

A. Reimbursable Costs

Amount

1. Contract fee (tree management plan, material development, inventory)	<u> </u>
2. Contracted labor (tree removals, pruning, planting, inventory)	<u>\$10,610</u>
3. Purchased materials for inventory or tree work	<u> </u>
4. Equipment rental (inventory, planting or other tree work)	<u> </u>
5. Education (training course fees, program materials)	<u> </u>
6. Tree planting plan preparation fee	<u> </u>
7. Trees for planting and delivery, less any discount	<u> </u>
8. Purchased materials for planting (stakes, mulch)	<u> </u>
SUBTOTAL	\$ <u>10,610</u>

B. Non-reimbursable Costs

1. Administrative costs (tree care, education, inventory)	<u> </u>
2. Paid employee labor (tree care, education, inventory)	<u> </u>
3. Donated labor (tree work, planting or inventory (at \$10/hr))	<u>\$1,300</u>
4. Donated equipment costs	<u> </u>
5. In-kind equipment	<u> </u>
6. Donated materials (stakes, mulch, etc.)	<u> </u>
7. Discount or credit for trees or tree planting	<u> </u>
8. Other	<u> </u>
SUBTOTAL	\$ <u>1,300</u>

C. Total Estimated Project Costs

(Add above and round to nearest dollar.)

\$ 11,910

Transfer total to back side of form

Please complete Cost-share Request Form on reverse side.

T.R.I.M. Cost-share Request Form

Applicant Roanoke Park Conservancy Contact person Curt Watkins

Project location Roanoke Park, Kansas City, Missouri 64111

C. Total Estimated Project Costs

\$ 11,910
Amount from front side of form

D. MDC Cost-share Computation

Missouri Department of Conservation's Cost Share
(60% X Total estimated project cost) \$ 7,146

Tree City USA Bonus
(15% X Total estimated project cost) \$ 1,786

NOTE: To qualify for bonus, project must be located in a community that is currently certified as a Tree City USA.

Missouri Arbor Award of Excellence Bonus
(5% X Total estimated project cost) \$ _____

NOTE: To qualify for bonus, applicant must be the winner of an MAAE award.

SUBTOTAL
Add all amounts in D (above): \$ 8,932

SUBTOTAL REIMBURSABLE COSTS
Enter the SUBTOTAL from A on front side: \$ 10,610

TOTAL MDC COST SHARE \$ 8,932
Enter the smaller of the above two lines. Total MDC Cost Share cannot exceed Reimbursable Costs. Maximum available is \$10,000 unless specifically authorized.

E. Local Cost-share Computation

Total MDC Cost Share subtracted from Total Estimated Project Costs \$ 2,978

I certify that funds received through the Tree Resource Improvement and Maintenance program will be used only for the care of trees or planting of trees on public property, as noted in this application. I certify that all trees subject to this contract will be pruned in accordance with American National Standard Institute A300 *Standard Practices for Wood Plant Maintenance* specifications and that trees will be planted in accordance with the enclosed "How to Plant a Tree."

Pete Browne, Treasurer, Roanoke Park Conservancy

Name and Title of Representative

Signature of Representative

Date

Project Background

Roanoke Park in Kansas City, Missouri is one of the original parks within the George Kessler designed Parks and Boulevards system of Kansas City. Surrounded by wooded bluffs and situated below stately homes, the park has been described as a slice of nature. Though under attack from non-native invasive plants, the park remains the home of a high number of native tree, shrub and ground cover species. The park has been the subject of an intensive public-private collaboration since 2010 to remove invasive plants, restore the forested areas of the park, increase use of the park and make capital improvements. The Roanoke Park Conservancy was formed as a Missouri non-profit and 501(c)3 to coordinate efforts benefiting the park by honoring the past and planting the future. A Master Plan detailing these goals has been written with neighborhood and professional input and adopted by the Kansas City Board of Parks Commissioners. The websites www.roanokeparkkc.org, www.facebook.com/RoanokeParkKC and an opt-in email mailing list of over 400 addresses are regularly used to communicate with the Park's neighbors, stakeholders and fans.

Of the park's 37.59 acres, approximately 19.4 acres are wooded. Efforts to benefit the wooded areas so far have primarily consisted of removal of shrub honeysuckle and ailanthus trees, pulling garlic mustard and treating euonymus wintercreeper. Many pounds of native grass seed have been planted in reclaimed areas and 237 trees saplings donated by the Missouri Department of Conservation were planted throughout the park this spring. Some areas reclaimed from shrub honeysuckle were graded and seeded with turf grass by the Kansas City Parks Department.

Several Greater Kansas City Area Champion Trees are located in the neighborhoods immediately adjacent the park, including Chinkapin Oak, Hophornbeam, Cutleaf Silver Maple, Trident Maple, Sourwood, Kentucky Yellowwood and Japanese Zelkova.

Tree Inventory Goals

The Roanoke Park Conservancy would like to document the current condition and composition of the trees in the park's wooded areas, boulevards and open areas by commissioning a tree inventory within the park utilizing the TRIM Cost Share Program. The inventory will use a sub-meter GPS unit to collect tree size and condition, genus and species, locations and concentrations of native to non-native trees, and locations of uniquely large or uncommon trees. The data will be converted to ESRI's GIS format and an i-Tree database. All data will be presented on several maps including online maps viewable on desktop browsers and smart devices. Long-term management of the park's wooded areas will be guided by the data and maps, which will be maintained over time, assisting in future seedling and sapling planting with the goal of maximizing species diversity and contributions to native food webs. Locally native species will be favored in the park's more heavily wooded areas.

Tree Inventory Scope

An inventory covering all 37.59 acres of the park is planned up to a maximum of 2,000 trees. Smaller trees below 3" DBH will not be inventoried. It is estimated that approximately 100 trees exist in open areas and along the park's Boulevards. The balance of trees are in seven wooded areas of varying density, generally bordering the park's boundaries and separated from the other areas by park or neighborhood roads. Removal of shrub honeysuckle is necessary in some areas to provide access before the tree inventory can take place.

Education / Publicity

The tree inventory project will be advertised on roanokeparkkc.org and through regular updates sent out to the Roanoke Park Conservancy email list with the MDC T.R.I.M. program credited in all communications. Once completed the GIS data and map will be hosted on arcgis.com.

Participants and Their Roles

Kansas City Missouri Department of Parks and Recreation – the landowner. Has approved the project and will consult with the Roanoke Park Conservancy during and after its completion.

Missouri Department of Conservation – Wendy Sangster of the Kansas City MDC office will consult with the Roanoke Park Conservancy throughout the project.

Roanoke Park Conservancy – the 501(c)3 advocacy organization formed to benefit the park. Will be responsible for the project, providing in-kind volunteer hour and monetary contributions and paying the contractor for work performed.

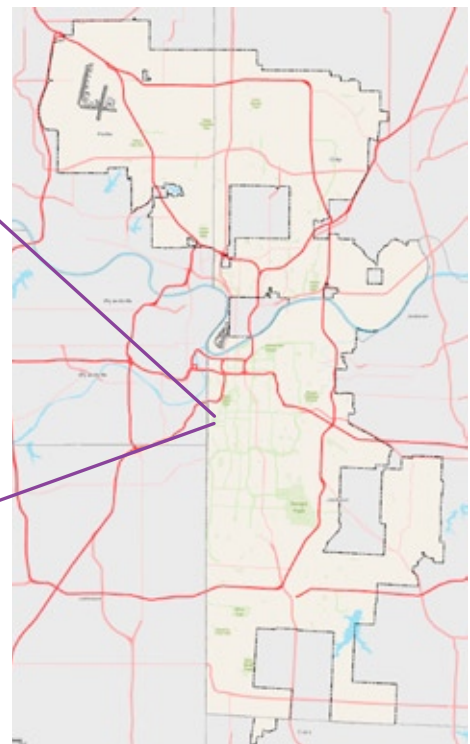
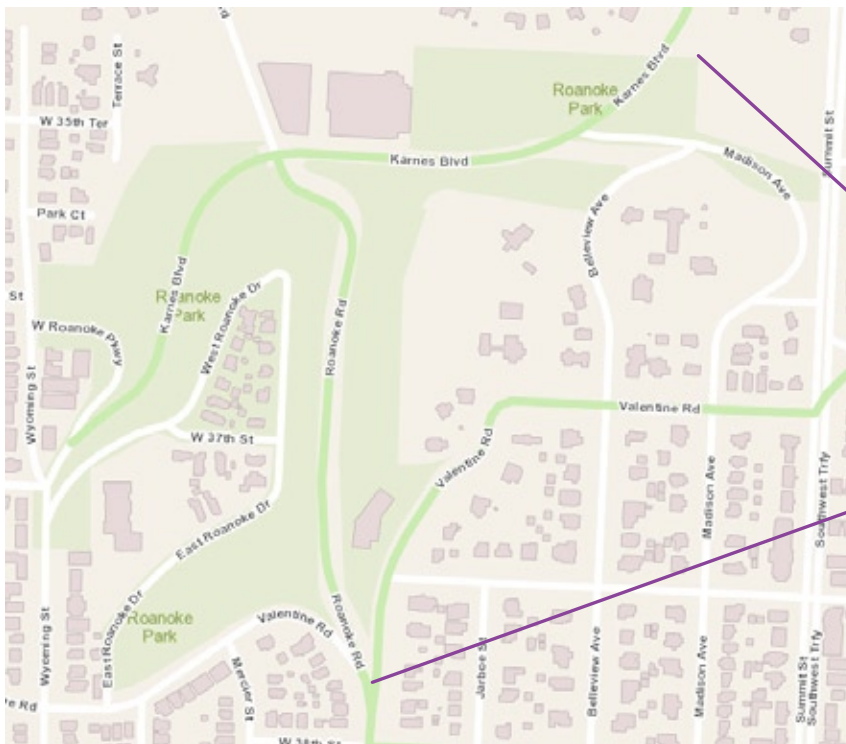
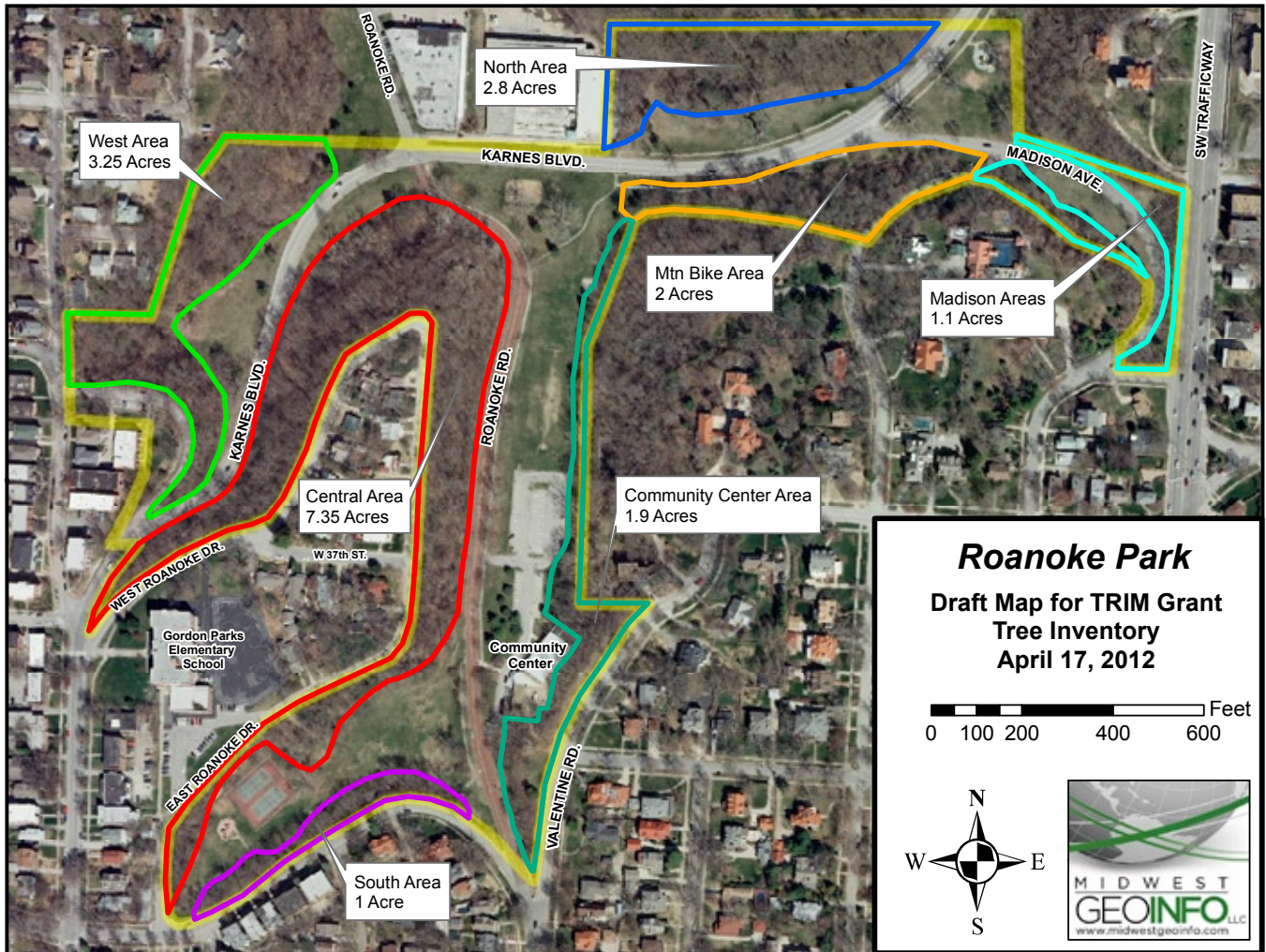
Midwest GeoInfo LLC – the contractor completing the tree inventory.

Project Timetable

October – November: Shrub honeysuckle removal and treatment in project area.

December – March: Contractor will complete the tree inventory, compile data and produce maps.

Throughout Project and After Completion: Project progress and results will be publicized through email and internet channels.





Surrounding neighborhoods in Kansas City, Missouri

ITEMIZED BUDGET

Reimbursable Expenses

See next page for detailed bid from contractor

\$10,610 to Midwest GeoInfo

Donated Labor

\$280 publicity volunteer (email and web publicity,
avg. 4 hrs/month x 7 months = 28 hrs)

\$1020 shrub honeysuckle removal and treatment
(Ten core volunteers pledged 9 hours each, plus
smaller commitments totalling 12 hours)

\$1,300 total (130 hrs x \$10/hr)

Grand Total

\$11,910 total

PROPOSAL



Contact: Molly Gosnell
molly@midwestgeoinfo.com
816-305-0614

DATE: April 17, 2012

To:
Roanoke Park Conservancy
Attn: Christopher DeLong

For:
Proposal for Tree Inventory for Roanoke Park,
Kansas City, MO

TASKS
<ul style="list-style-type: none"> Using GPS unit (with sub-meter accuracy), map and inventory 2,000 trees <ul style="list-style-type: none"> Record genus/species identified by an ISA Certified Arborist Record tree diameter at breast height (DBH) Record tree condition Record tree maintenance needs
DELIVERABLES
<ul style="list-style-type: none"> ESRI GIS data of inventoried trees
<ul style="list-style-type: none"> i-Tree database of inventoried trees
<ul style="list-style-type: none"> Map of inventory showing genus/species, size and condition
<ul style="list-style-type: none"> Map showing locations and concentrations of native to non-native trees
<ul style="list-style-type: none"> Map showing locations of valuable trees (uniquely large or uncommon)
<ul style="list-style-type: none"> Map customized for long term management to guide future seedling and sapling planting by determining which species are represented and which are missing or rare
<ul style="list-style-type: none"> ESRI ArcGIS Project files (.mxd) of all maps
<ul style="list-style-type: none"> Metadata for the GIS data (Documentation of how data was collected, description of data)
Total Cost: \$10,610.00

THREE YEAR MAINTENANCE PLAN FOR INVASIVE SPECIES

Summer, Fall, Winter, all years

Small core group volunteer work days most Saturday mornings with the exception of holidays.

Work to include:

- ▶ *cutting shrub honeysuckle and small ailanthus trees and treating cut stumps with Tordon*
- ▶ *dragging out cut brush for Parks Department removal*
- ▶ *cutting euonymous wintercreeper vines growing up trees and treating cut stumps with Glyphosate*

Spring, all years

Small core group volunteer work days most Saturday mornings with the exception of holidays.

Work to include:

- ▶ *pulling shrub honeysuckle seedlings to prevent re-infestation*
- ▶ *pulling flowering garlic mustard to prevent re-infestation*

Large Work Days, Spring and Fall, all years

Well publicized work days have been held the past two years and will continue to be held. Two large work days are planned for the Spring season and two for the Fall.

September – October, all years

- ▶ *spray monoculture euonymous wintercreeper areas with dilute Glyphosate, after weather cools, before tree leaves fall.*

November, all years

- ▶ *spray first year Garlic Mustard plants with dilute Glyphosate*

December, all years

- ▶ *seed areas reclaimed from invasives with native grass and forb seed*

Spring, Summer 2013

Tree Inventory Completed. Consult with Parks Department and Missouri Department of Conservation on results. Develop more specific planting plans / species lists for park wooded areas.

Fall 2013

Choose tree and shrub species for wooded areas planting in areas reclaimed from invasives. Prepare order forms for MDC Nursery and restoration specialist nurseries. Fund raise, plan spring volunteer planting work days.

Spring 2014

Plant seedlings, shrubs and other plants in areas reclaimed from non-native invasive species.

Fall 2014 and Beyond...

Ongoing invasive species maintenance is expected to continue into the foreseeable future, with methods and success being assessed periodically.

LETTER OF PERMISSION see next pg...



Board of Parks and Recreation Commissioners



"A Nationally Accredited Agency"

June 1, 2012

Sylvester "Sly" James Jr.,
Mayor

Jean Paul Chaurand,
President

McClain Bryant,
Commissioner

Allen Dillingham,
Commissioner

Aimee Gromowsky,
Commissioner

David Mecklenburg,
Commissioner

Mark L. McHenry,
Director

Mr. Curt Watkins, President
Roanoke Park Conservancy
Kansas City, Missouri

RE: Roanoke Park Grant Application

Dear Curt,

The City of Kansas City Parks and Recreation Department would like to express our support for the tree inventory project at Roanoke Park. This work is in accordance with the Master Plan approved by the Kansas City Board of Parks and Recreation Commissioners in 2011.

The work of your group in the clearing of honeysuckle and other invasive species as opened up the understory of this urban gem and exposed areas of the park that had been obscured for decades. Planting new trees and other native vegetation in the park will benefit the community for years to come.

We would like to express our appreciation for the Roanoke Park Conservancy's partnership with the Parks Department and the continued efforts that has gone into the park's transformation. Please contact me at 816-513-7619 should you need any additional information.

Sincerely,

Heather A. Runkel, ASLA
Project Manager

cc: Mark McHenry, Director
Travis W. Kiefer, P.E., Assistant Director
Kevin LaPointe, Forester
File

PUBLICITY PLAN

Education / Publicity

Progress and results of the tree inventory project will be publicized on roanokeparkkc.org and through regular updates sent out to the Roanoke Park Conservancy email list (400+ subscribers) with the MDC T.R.I.M. program credited in all communications. Additional channels will include the Conservancy's facebook page, and postings to the email groups controlled by the adjacent neighborhood's neighborhood associations. Once completed the GIS data and map will be hosted on arcgis.com.

- ▶ *October 2012. Announcement of grant award (web page article, email distribution, facebook page post)*
- ▶ *Early November 2012. 2nd Announcement of grant award, more information (web page article, email distribution, facebook page post)*
- ▶ *December 2012 - April 2013. Monthly emails / web updates noting Tree Inventory progress and results.*

Roanoke Park News & Events Emails



www.roanokeparkkc.org



www.facebook.com/roanokeparkkc

