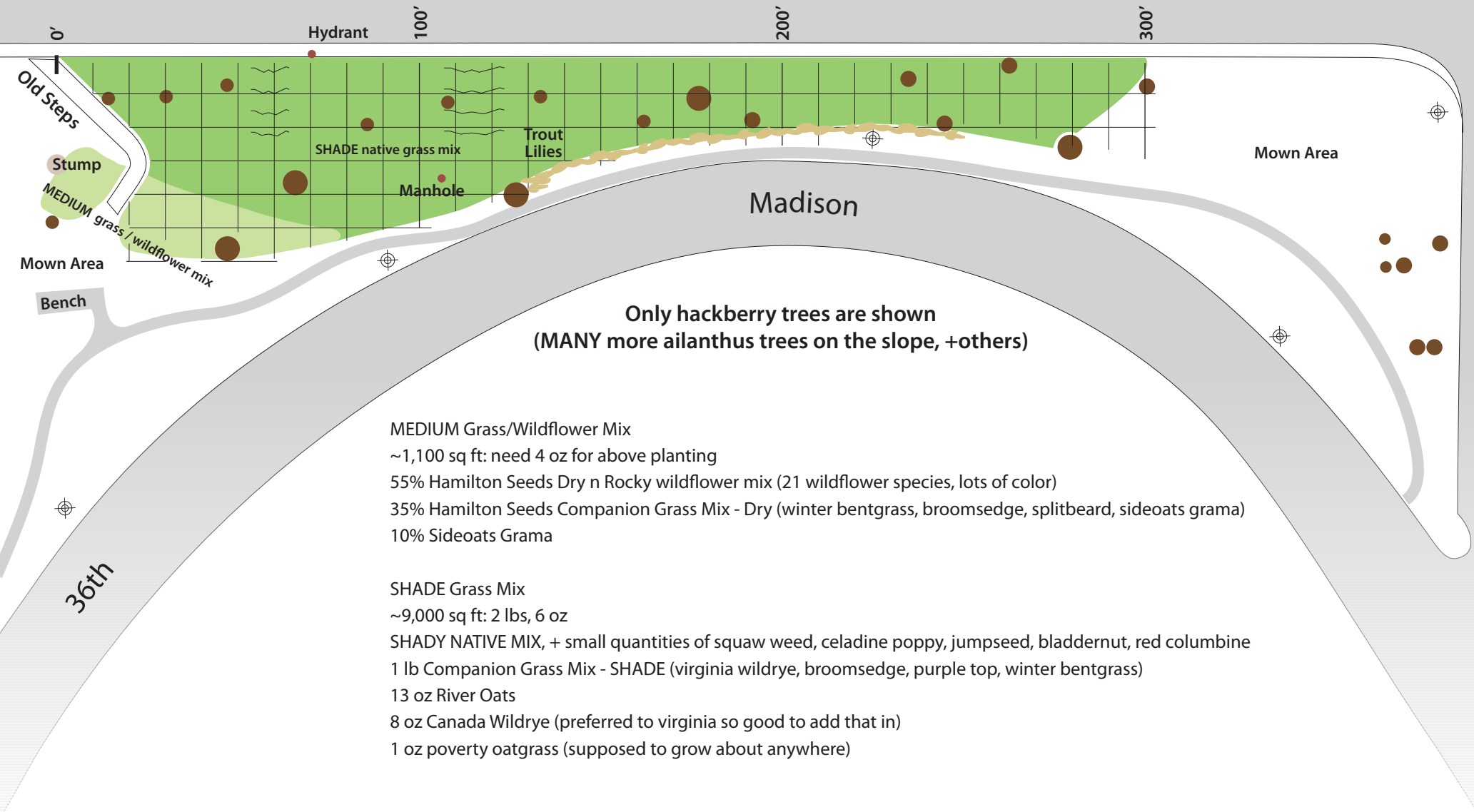


Valentine Slope Restoration Plan

www.roanokeparkkc.org/plans/planting-the-future



Southwest Trafficway



Valentine Slope Restoration Plan

- ▶ **Through October 2012** - Remove existing vegetation, control shrub honeysuckle, corn lillies, wintercreeper, buckthorn and Japanese honeysuckle.
- ▶ **November 2012** - Seed mix of native grasses and wildflowers. Light mulch and tamp down.
- ▶ **Please stay off** the planting area! (No rock climbing kids.)
- ▶ **Do not pull weeds, cut them.** (Disturbing the soil will kill the baby grass and wildflower seedlings.)
- ▶ **Save the trout lilies** - One of two known patches of this native spring ephemeral lies just above the rock wall at its north end.
- ▶ **2013 Control of Annual Weeds** - String trimming to 6" every time the annual weeds get to 1' will take place to keep annual weeds from reproducing.
- ▶ **2014 Selectively control annual weeds.** - String trimming of annual weeds may or may not be needed.
- ▶ **Tree composition** - After grasses are established and slope stabilized, remove Ailanthus trees in stages and replace with favored native oak, hickory, black cherry, flowering dogwood etc.
- ▶ **Shrub layer** - Establish shrub layer toward the top of the slope to provide visual screening of Southwest Trafficway and aid sound dampening of traffic. (Roughleaf dogwood, fragrant sumac, bladdernut, etc.)
- ▶ **Ongoing** - Control for re-invasion of shrub honeysuckle, japanese honeysuckle, wintercreeper and buckthorn.